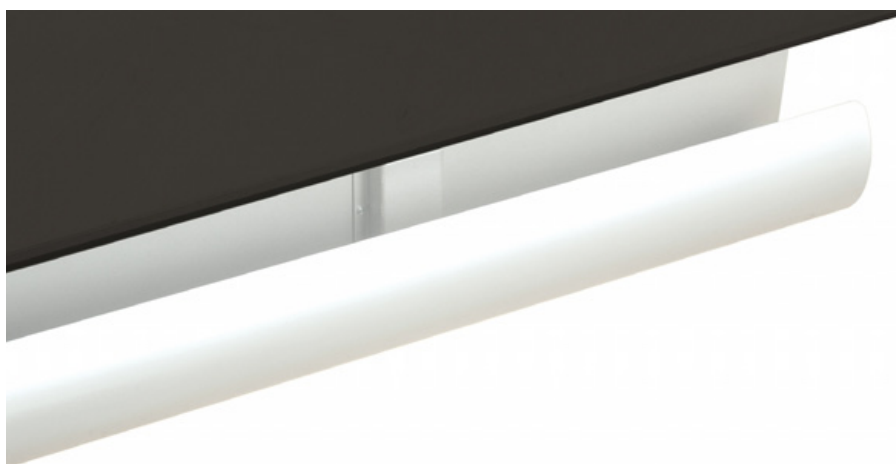


# LiftPipe Cable Tray

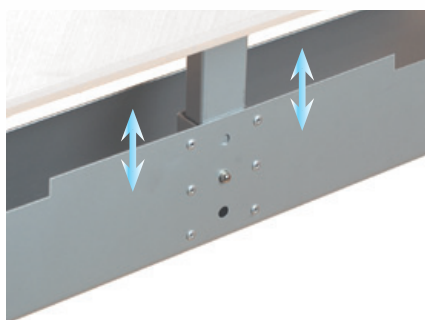
by  
**Kondator**



LiftPipe 429-PI02 is available in Black, Chrome, White and Silver.

## Simple as that !

Cables and sockets are placed in the tray on the floor. Lift the tray up to the desired level in the "click-in" bracket. The opposite action will release the tray quickly in a second.



LiftPipe is available in lengths; 650 mm, 1050 mm and 1450 mm.  
Note. LiftPipe 429-PI03 includes 2 brackets.



## Unique cable management

Elegant design with a convex front, that fits all types of desks and environments. A genuinely smart construction easy to assemble with central attachment. Can be adjusted on three levels with a lock without using tools. The lock also makes it easy to remove in order to reach cables etc. on the floor. Two cutouts in the rear allows for easy cabling. LiftPipe is available in three different lengths.



### SPECIFICATIONS

- Length 650 mm  
Part no 429-PI01      Silver
- Length 1050 mm  
Part no 429-PI02      Silver  
Part no 429-PI02B    Black  
Part no 429-PI02W    White  
Part no 429-PI2C      Chrome
- Length 1450 mm  
Part no 429-PI03      Silver
- Dimensions, DxH:  
100x100 mm
- Adjustable levels:  
122,152,182 mm
- RCD – Registered design.